
Sunnyside News

*Voice of the Sunnyside Neighborhood Association
32 Years of Neighbors Helping Neighbors, 1975-2007*

Vol.8, No.1



Winter 2007

SNA Meetings

May 7
August 6
November 5

7:00 pm
St. Finn Barr
Church Hall,
Edna at Hearst

All Sunnyside
residents
are invited
to attend.



President's Message

Hi Everybody,

Here we are again — the clocks have changed and we are looking forward to another Spring. We are not going to plan another picnic until the Park is ready. If I get enough interest from the membership, I will spearhead a neighborhood-wide garage sale for April or May.

Construction in the Sunnyside is getting ready to go into hyper-drive very soon. The first thing will be a new water main that will be going down Phelan and Judson, to be followed by the construction of the City College theater on Phelan, and the housing and retail complex on the current Kragen site.

The Kragen site will be a huge pair of buildings approximately 50 feet high. The first story is slated for retail with four stories of housing above. It would look great somewhere else. My “personal” opinion is that buildings this size have no place in our low impact-housing neighborhood.

The reason I am speaking up on this now is because I see the same thing happening on Monterey Blvd. The Safeway site, the Mini-Market site and a few other parts of the street would be prime development spots where money could be made by building these high-rise facilities. There are probably ways to stop such projects, but it will take the members of our community to send the message to city hall.

I for one would live downtown if I wanted to live next to 50 foot high buildings.

I am again calling out to all of you for your ideas and support for any new projects or events you would like the SNA to undertake. We are always looking for people to lend us a hand. This year has been particularly busy for several of us on the board with jobs and family obligations.

If anybody would like to head up any kind of improvement committee, please let me know and we will help you get it going.

Thanks for all of your support and as always if there is a problem you need help with, don't hesitate to call Chris Coghlan, 415-902-7310. ☀

SNA Contacts

Please contact any board member when you have neighborhood concerns.

President
Chris Coghlan
Chris@CoghlanRealEstate.com
902-7310

Vice-President
Michael Ames
vp@snasf.org

Treasurer
Robin Levine
r_levine@yahoo.com
469-7884

Secretary
Rita Evans
rita_e@pacbell.net
587-6234

Member-at-Large
Becky Braselton
becbraselton@yahoo.com

You can also reach us at
SNA, PO Box 27615,
San Francisco, CA 94127,
or info@snasf.org.

Visit SNA's website at
www.snasf.org. ⚙

From the Editor

by Rita Evans

The content of this issue is largely based on suggestions and questions from neighbors at the February SNA meeting.

A neighbor asked how to have a block designated for *Residential Permit Parking* - see page 3 for a description of the process.

Another noted that violations of the Munical Code are detrimental to the quality of life and degrade our neighborhood. He specifically cited two practices, paving over front yards and leaving *garbage cans on sidewalks*. See page 6 for what the code says.

Who do you *contact at City College* with questions or complaints about construction, graffiti, etc.? See page 5.

Mike Cavanaugh from the Ingleside Police Station told us about a website where residents can review crime statistics and generate maps. On page 4 is a description and instructions for *CrimeMAPS*.

Captain Paul Chignell sends daily emails listing crime and police activity in Ingleside. See page 7 for instructions on subscribing.

How do you *contact Supervisor Sean Elsbernd* (District 7)? Phone number and email address are on page 3.

And finally, when using a cell phone, dial 553-8090, not 911, for *emergency calls*. See page 7. ⚙

Sunnyside News

Sunnyside News is published four times per year. SNA encourages members to submit news, features or letters to the editor to *Sunnyside News*. All letters must be signed. All items are subject to editing.

For more information, including the next newsletter deadline, please contact *Sunnyside News* editor Rita Evans, 415-587-6234, rita_e@pacbell.net, or at SNA, PO Box 27615, SF, CA, 94127.

Sunnyside Neighborhood Association assumes no responsibility for the statements and opinions expressed in Sunnyside News. Editorial views do not necessarily represent the official position of SNA. ⚙

Process for Residential Permit Designation Involves Petitions, Multiple Hearings and Reviews

In Sunnyside, we have particular parking pressure due to City College's large commuter population. Residential Permit Parking provides long-term parking for residential permit holders while restricting visitors to the neighborhood, such as commuting students, to a few hours of parking.

Complete information on how to have your block designated for permit parking is available from MTA, but here's an outline of the requirements:

To extend an area already designated for Residential Permit Parking:

- Proposed block(s) must be contiguous to existing residential permit parking area.
- Petition signed by at least 50% of households on each block.
- 80% of on-street parking spaces in area occupied during day.

To establish a new Residential Permit Parking area:

- Proposed block(s) must be contiguous and contain at least one mile of street frontage.
- Petition signed by at least 250 households in area.
- At least 50% of vehicles parked on street in area must be non-resident vehicles.
- 80% of on-street parking spaces in area occupied during day.

Review, legislation, approval and sign installation will take at least six months for extensions and twelve months for new areas. There's no guarantee blocks will be designated, even with neighborhood support. The process includes:

1. Review by Traffic Engineering Division
2. Field study conducted
3. Review by ISCOTT
4. Departmental Public Hearing
5. Review by MTA Board of Directors
6. Review by a committee of the Board of Supervisors
7. Review by the full Board of Supervisors
8. Approval by the Mayor
9. Sign installation and permit issuance

Download petition forms at www.sfgov.org/site/dpt_index.asp?id=13442 or contact MTA's Traffic Engineering Division at 1 S. Van Ness Avenue, 7th Floor, SF, CA 94103, 415-701-4500. ☎

SFPUC Water Transmission Line Installation

For the next two years, Ranger Pipelines will be installing a new water transmission line under contract with the SFPUC.

The outlined route includes Phelan and part of Judson and Edna.

Heavy equipment noise and loss of parking spaces are expected. Water service and Muni should not be disrupted.

Call Robert Lopez at SFPUC, 554-3286, for more information.

You can reach Ranger Pipelines, 800-876-3778, 24 hours a day.

Dues Due?

Check Your Mailing Label

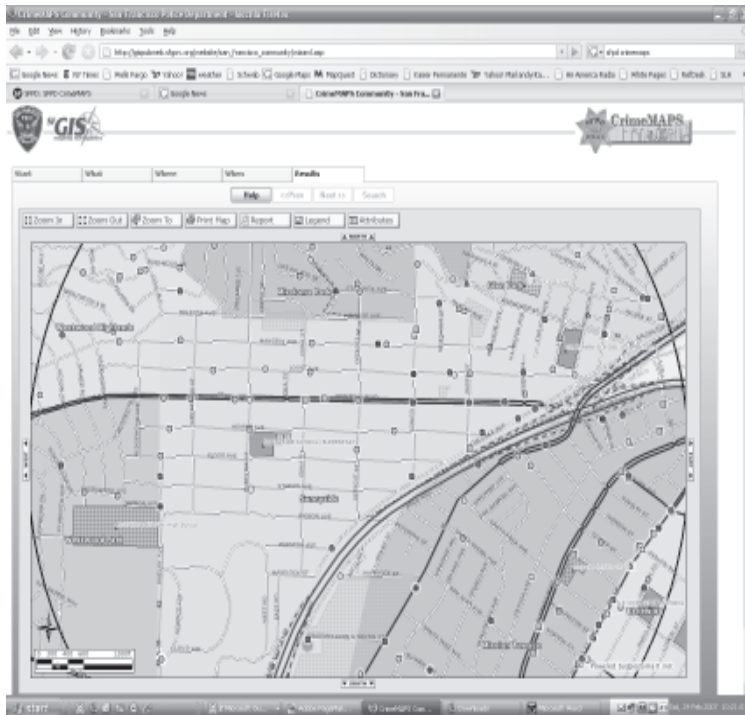
If the date on your mailing label is *March 2007* or earlier, it's time to pay your dues.

You'll find a membership form on page 7.

Questions or corrections regarding your membership information? Contact Rita Evans, 587-6234, or rita_e@pacbell.net. ☎

City Crime Activity Easily Mapped Using SFPD's *CrimeMAPS*

by Rita Evans



CrimeMAPS is a new website from the SF Police Department.

The site allows users to produce maps from police reports. You can create, for example, a map of Sunnyside showing all offenses that have been reported in the past 90 days. The resulting full-color map will show offenses by location.

To create a map, go to SFPD's *CrimeMAPS* (gispubweb.sfgov.org/website/san_francisco_community/default.asp)

Consent to the conditions.

Click Next. Select All or choose types of offense.

Click Next. Enter a street address, or street and cross-street – Flood and Detroit works well for a map of Sunnyside.

Choose a distance from that point, ½ mile for Sunnyside.

Click Next. Choose a time period of one to 90 days.

Click Search, and a map will be generated.

Street names are clearly labeled and schools are clearly marked.

Offense types include homicide, forcible rape, robbery, aggravated assault, arson, burglary, larceny/theft, vehicle theft, vandalism, and drug offenses.

The software was very easy to use and I generated my first *CrimeMAPS* map in less than a minute.

To generate a report, first produce a map. Then choose the Reports tab. Easy-to-follow instructions allow you to produce a summary report. The summary includes a bar graph and the number of incidents that occurred in the specified area.

Detailed reports include the date and time of each incident, and descriptions such as "Aggravated assault with knife," or "Attempted theft from locked vehicle," "Possession of methamphetamine," or "Robbery, bodily force." Specific locations are not provided in the detailed reports.

Because of the colors chosen for burglary and larceny/theft, it's difficult to distinguish between those offenses on the maps. On a map of a larger area outside of Sunnyside that included two homicides, I couldn't distinguish the locations of the homicides.

Even with those minor drawbacks, *CrimeMAPS* looks like a good, easy way for residents to monitor the frequency and location of different types of crime in their neighborhoods.

CrimeMAPS is for informational purposes only. Maps are based on incident data from police reports.

Construction Activities Ongoing at City College; Monterey Repaving Ahead

City College Update

City College Associate Vice Chancellor Jim Blomquist reported on the college's current and planned construction projects at SNA's February meeting. He distributed packets showing campus building plans and answered neighbors' questions.

Reservoir

The east side of the reservoir will be raised to the level of Phelan Avenue to provide easier pedestrian access to the facilities planned for this area.

Surface parking will be provided around the new Performing Arts Center and Joint Use Building. Underground parking had been planned for the Center but will not be built due to construction costs.

Construction of the Performing Arts Center should begin by mid-2008 and will include an auditorium, classrooms and offices. It will be located on Phelan near Riordan High School. The Joint Use building will be just to the south and will provide space for programs in conjunction with San Francisco State University.

CCSF is seeking LEED certification which recognizes organizations for using sustainable materials and processes building construction.

Other Construction

Construction of the large, new Wellness Center on Ocean, which will feature a gymnasium and pool, is well under way. It is scheduled to be completed by March 2008.

After a delay of some months, ground has been broken for the Child Development Center on Judson.

The five small, low-profile buildings will use green design. The buildings will be energy efficient and roofs will be covered with vegetation.

Contacting CCSF

If you have questions or concerns, contact one of the following:

Chancellor Philip Day, Chancellor,
pday@ccsf.edu, 415-239-3303

Peter Goldstein, Vice Chancellor of Finance & Administration - pgoldste@ccsf.edu, 415-241-2229

Jim Blomquist, Associate Vice Chancellor,
Facilities Management - jblomqui@ccsf.edu,
415-239-3750

Facilities Planning and Construction Office,
415-239-3055

Dist. 7 Report - Supv. Elsbernd

Supervisor Sean Elsbernd reported that he convened a meeting of representatives of Monterey Blvd. neighborhoods to address problems associated with this arterial. Board members Chris Coghlan and Robin Levine represented SNA. Work has begun on Monterey and it will be repaved from I-280 to Ridgewood.

West Portal Branch of SF Public Library reopened on February 10. A new library building is slated for Ocean and Plymouth but construction will not begin for two years.

A neighbor asked about the lack of enforcement of property code violations such as paving front yards and leaving trash cans on sidewalks. Sean said to call or email him if paving is to take place or has just happened and he will work with Planning to address it.

A Transit Effectiveness Project is underway to do statistical analysis of routes, timing and stops for buses and Muni. Sean believes this will make a case for better service on the west side of the city. The report will be issued in about a year.

Contacting Sean Elsbernd

To contact Supervisor Elsbernd, call 554-6516 or email sean.elsbernd@sfgov.org.

Stash Those Garbage Cans Out of Sight, Not on the Sidewalk

Garbage cans kept on sidewalks aren't just unsightly and an obstacle to pedestrians. They're also a violation of the local public works code.

Don't store your garbage cans on the sidewalk.

Cans may be placed on the sidewalk after 6:00 p.m. on the day before collection day.

Cans *must* be removed from the sidewalk within 24 hours of collection.

Cans *must* be stored out of sight.

From the San Francisco Municipal Code (Public Works Code):

SEC. 170. GARBAGE RECEPTACLES.

(a) Garbage Receptacles Prohibited on Sidewalk, Street, or Any Public Right-of-Way.

[Garbage cans are] "...containers or receptacles used for the collection of garbage, refuse, broken glass, boxes, vegetable matter, rubbish or other like matter, recycling, or green waste..." and include the black, blue and green containers from Sunset Scavenger.

[Out of sight means] "...receptacles shall be returned to an enclosed area or other area that blocks views of the receptacles from the public right-of-way [sidewalk].

"Under no circumstances are said receptacles to be stored in plain sight of the public when viewed from any public right-of-way unless said receptacles have been placed out for collection."

NERT Offers Emergency Training

Would you know what to do if you woke up in the middle of a 7.5 earthquake? What if there was a gas leak on your block?

NERT, the Neighborhood Emergency Response Team, can help you to be self-sufficient in case of disaster. City firefighters provide training which is offered free to all San Francisco residents.

Sunnyside needs new NERT trainees. You are encouraged to attend training and get involved.

To enroll, call 415-970-2024. See NERT's website for more information, www.sfgov.org/site/sfnert_index.asp, and for online registration. Some of the upcoming sessions:

Potrero Hill

Begins March 31, Saturdays, 9:00am-4:00pm

March 31, April 7 and 14

St. Theresa's Church Hall, Connecticut at 19th Street

Western Addition

Begins March 13, Tuesday eves, 6:00pm-9:00pm

March 13, 20, 27, April 3, 10, and 17

West Bay Conference Center, 1290 Fillmore/Eddy

Cantonese NERT training 2007

Begins March 17, Saturdays 9:00am-4:00pm

Lunch provided

March 17, 24, 31

Chinatown - Cathay Post #384, 1524 Powell Street /Vallejo

Personal Preparedness Workshop

Wednesday March 28, 7:00pm-9:00pm

This workshop will cover what every individual should know to personally prepare for large and small disasters.

1833 Page Street @ Cole

Cow Hollow/Marina /Golden Gate Valley

Begins April 16, Mon. eves, 6:30pm-9:30pm

April 16, 23, 30, May 7, 14, and 21

St. Mary the Virgin Church Hall, 2325 Union Street

Forest Hill/Laguna Honda/Midtown Terrace/

Golden Gate Heights

Begins April 24, Tues. eves, 6:30pm-9:30pm

April 24, May 1, 8, 15, 22 and 29

Forest Hill Church Hall, 250 Laguna Honda Blvd.

Crab Feed and Entertainment

St. Finn Barr Goode Hall
Saturday, March 24
5:30-12:00

Salad, bread, pasta, crab, dessert

Music and Entertainment

\$45 in advance, \$50 at door
Reservations due March 14

Contact Alice Guidry, 585-4524,
Cindy Philapil, 337-1911,
or the Rectory, 333-3627

Track Daily Crime Activity

Captain Paul Chignell issues a daily email report of police and criminal activity. If you would like to receive these fact-filled summaries, contact the captain at Paul.Chignell@sfgov.org.

Arrests made the previous day are listed with the names of the officers involved, the circumstances, charges, time and place (street and block number). Criminal incidents are listed with time and place.

These reports are an excellent way to monitor police and criminal activity in Ingleside.

You can reach Captain Chignell at 404-4000.

Call 553-8090 from Cell Phones

If you need to make an emergency call from your cell phone, don't use 911 – call 553-8090. If you call 911, your call must be routed through the CHP. Add 553-8090 to your speed dial.

⚙ SNA Annual Membership Dues ⚙

Membership in the Sunnyside Neighborhood Association is \$15 per year for households and \$25 per year for businesses.

Make checks payable to SNA, and send to:
SNA, PO Box 27615, San Francisco, CA 94127

Name (please **print**) _____

Address _____ Zip Code _____

Phone _____ E-mail _____

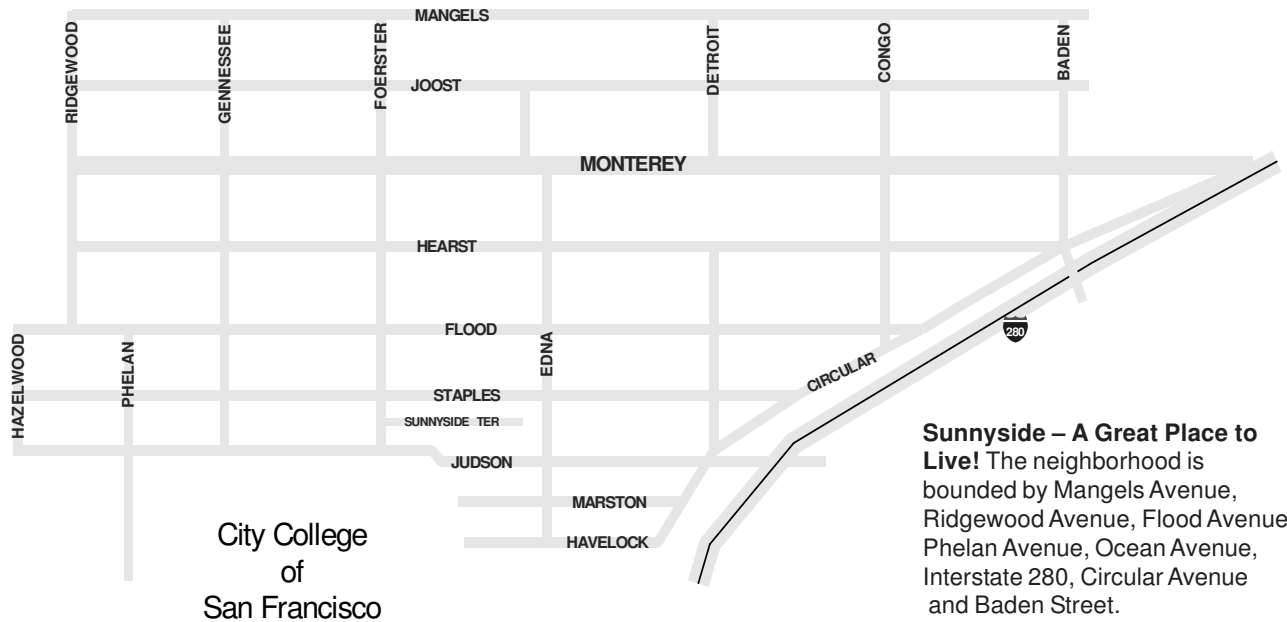
Check one: Household \$15 _____ or Business \$25 _____

Additional donation: \$ _____

Win07

Donations to Sunnyside Neighborhood Association, a 501(c)(3) non-profit organization, are tax-deductible.

Sunnyside



Sunnyside Neighborhood Assn.
P.O. Box 27615
San Francisco, CA 94127

Time to renew?
Send your dues today!